

Features

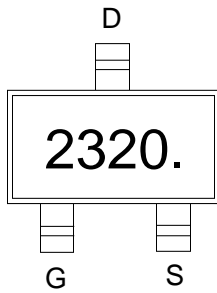
- Trench Power LV MOSFET technology
- High Power and current handing capability

Product Summary

V_{DS}	$R_{DS(ON)}$ TYP	I_D
20V	12m Ω @4.5V	6A
	15m Ω @2.5V	

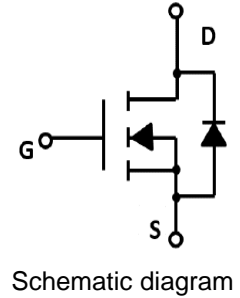
Application

- PWM application
- Load switch



2320.: Device code

Marking and pin assignment



Halogen-Free

Absolute Maximum Ratings (TA=25°C unless otherwise noted)

Symbol	Parameter	Rating	Unit	
Common Ratings (TC=25°C Unless Otherwise Noted)				
V_{DS}	Drain-Source Breakdown Voltage	20	V	
V_{GS}	Gate-Source Voltage	± 10	V	
T_J	Maximum Junction Temperature	150	$^{\circ}C$	
T_{STG}	Storage Temperature Range	-50 to 155	$^{\circ}C$	
I_S	Diode Continuous Forward Current	$T_C=25^{\circ}C$	6	A
Mounted on Large Heat Sink				
I_{DM}	Pulse Drain Current Tested	$T_C=25^{\circ}C$	25	A
I_D	Continuous Drain Current	$T_C=25^{\circ}C$	6	A
P_D	Maximum Power Dissipation	$T_C=25^{\circ}C$	1.25	W
$R_{\theta JA}$	Thermal Resistance Junction-to-Ambient		100	$^{\circ}C/W$

Ordering Information (Example)

Type	Package	Marking	Minimum Package(pcs)	Inner Box Quantity(pcs)	Outer Carton Quantity(pcs)	Delivery Mode
MLSK2320B	SOT-23-3L	2320.	3,000	45,000	180,000	7" reel

Electrical Characteristics (T _J =25°C unless otherwise noted)						
Symbol	Parameter	Condition	Min	Typ	Max	Unit
Static Electrical Characteristics @ T_J = 25°C (unless otherwise stated)						
BV _{(BR)DSS}	Drain-Source Breakdown Voltage	V _{GS} =0V, I _D =250μA	20	--	--	V
I _{DSS}	Zero Gate Voltage Drain Current	V _{DS} =20V, V _{GS} =0V	--	--	1	μA
I _{GSS}	Gate-Body Leakage Current	V _{GS} =±10V, V _{DS} =0V	--	--	±100	nA
V _{GS(th)}	Gate Threshold Voltage	V _{DS} =V _{GS} , I _D =250μA	0.45	0.7	1.0	V
R _{DS(on)}	Drain-Source On-State Resistance	V _{GS} =4.5V, I _D =5A	--	12	18	mΩ
		V _{GS} =2.5V, I _D =4A	--	15	22	mΩ
		V _{GS} =1.8V, I _D =2A	--	19	35	mΩ
Dynamic Electrical Characteristics @ T_J = 25°C (unless otherwise stated)						
C _{ISS}	Input Capacitance	V _{DS} =10V, V _{GS} =0V, f=1MHz	--	885	--	pF
C _{OSS}	Output Capacitance		--	135	--	pF
C _{RSS}	Reverse Transfer Capacitance		--	120	--	pF
Switching Characteristics						
Q _g	Total Gate Charge	V _{DS} =10V, I _D =6A, V _{GS} =4.5V	--	11	--	nC
Q _{gs}	Gate Source Charge		--	1.75	--	nC
Q _{gd}	Gate Drain Charge		--	3	--	nC
t _{d(on)}	Turn-on Delay Time	V _{DD} =10V, R _L =1.5Ω, V _{GS} =4.5V, R _G =3Ω	--	7	--	nS
t _r	Turn-on Rise Time		--	45	--	nS
t _{d(off)}	Turn-Off Delay Time		--	30	--	nS
t _f	Turn-Off Fall Time		--	50	--	nS
Source- Drain Diode Characteristics						
V _{SD}	Forward on voltage	T _J =25°C, I _S =6A	--	--	1.2	V

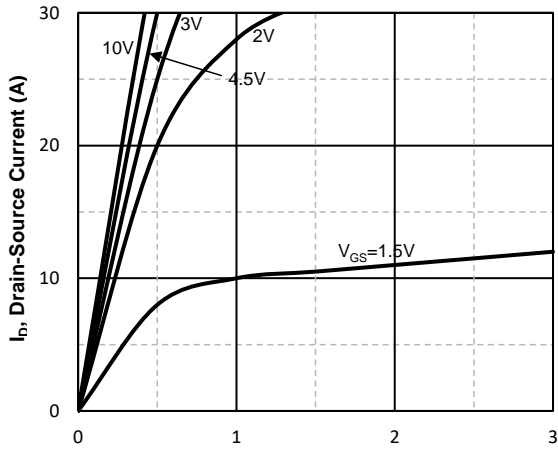
Typical Operating Characteristics


Fig1. Typical Output Characteristics

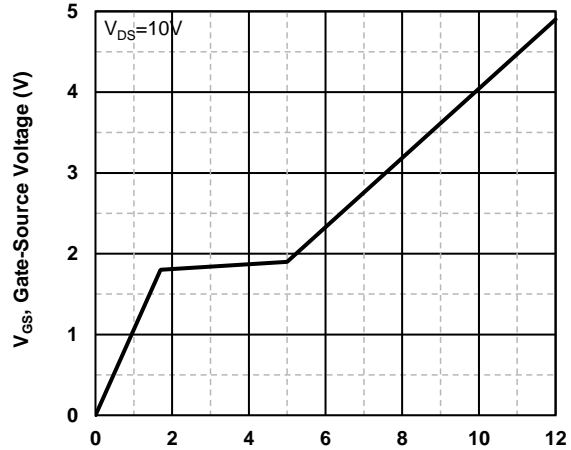


Fig2. Typical Gate Charge Vs. Gate-Source Voltage

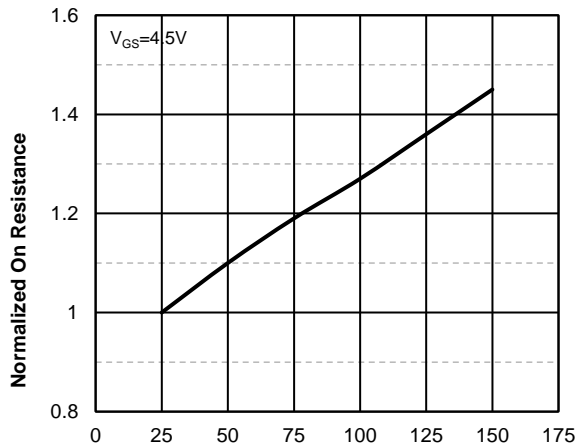


Fig3. Normalized On-Resistance Vs. Temperature

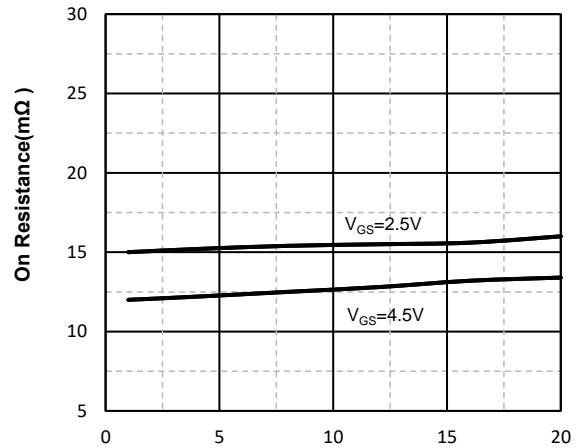


Fig4. On-Resistance Vs. Drain-Source Current

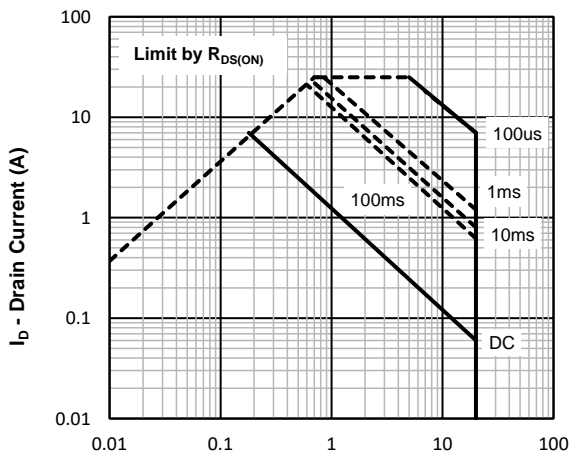


Fig5. Maximum Safe Operating Area

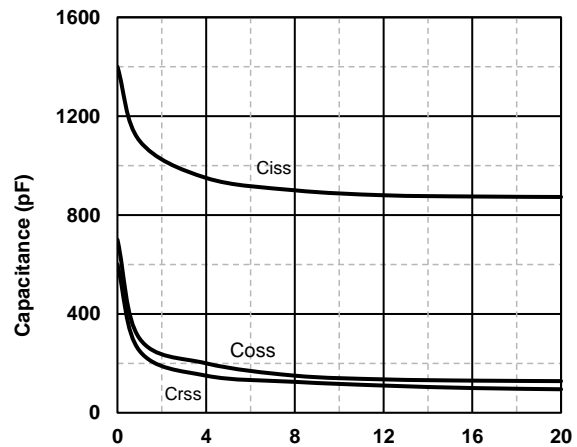
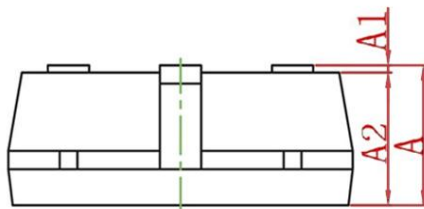
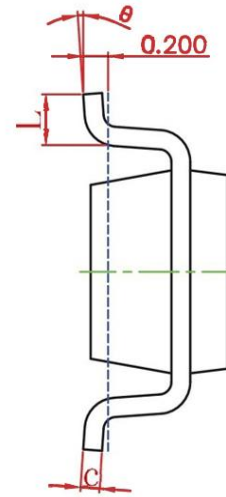
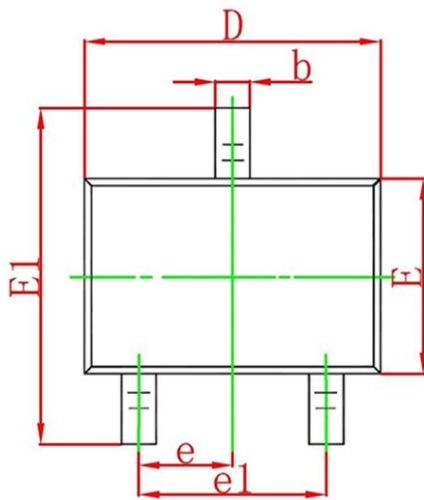


Fig6. Typical Capacitance Vs. Drain-Source Voltage

SOT-23-3L Package information


Symbol	Dimensions in Millimeters(mm)		Dimensions In Inches	
	Min	Max	Min	Max
A	1.050	1.250	0.042	0.050
A1	0.000	0.100	0.000	0.004
A2	1.050	1.150	0.042	0.046
b	0.300	0.500	0.012	0.020
c	0.100	0.200	0.004	0.008
D	2.820	3.020	0.112	0.120
E	1.500	1.700	0.060	0.068
E1	2.650	2.950	0.106	0.118
e	0.950TYP		0.037TYP	
e1	1.800	2.000	0.071	0.079
L	0.300	0.600	0.012	0.024
θ	0°	8°	0°	8°